

# State of Wyoming Corner Record

(In compliance with the CORNER PERPETUATION AND FILING ACT, Wyoming Statutes, 1997 Section 33-29-140 et. seq., and the Rules and Regulations of the Board of Professional Engineers and Professional Land Surveyors)

Reverse side of this form may be used if more space is needed.

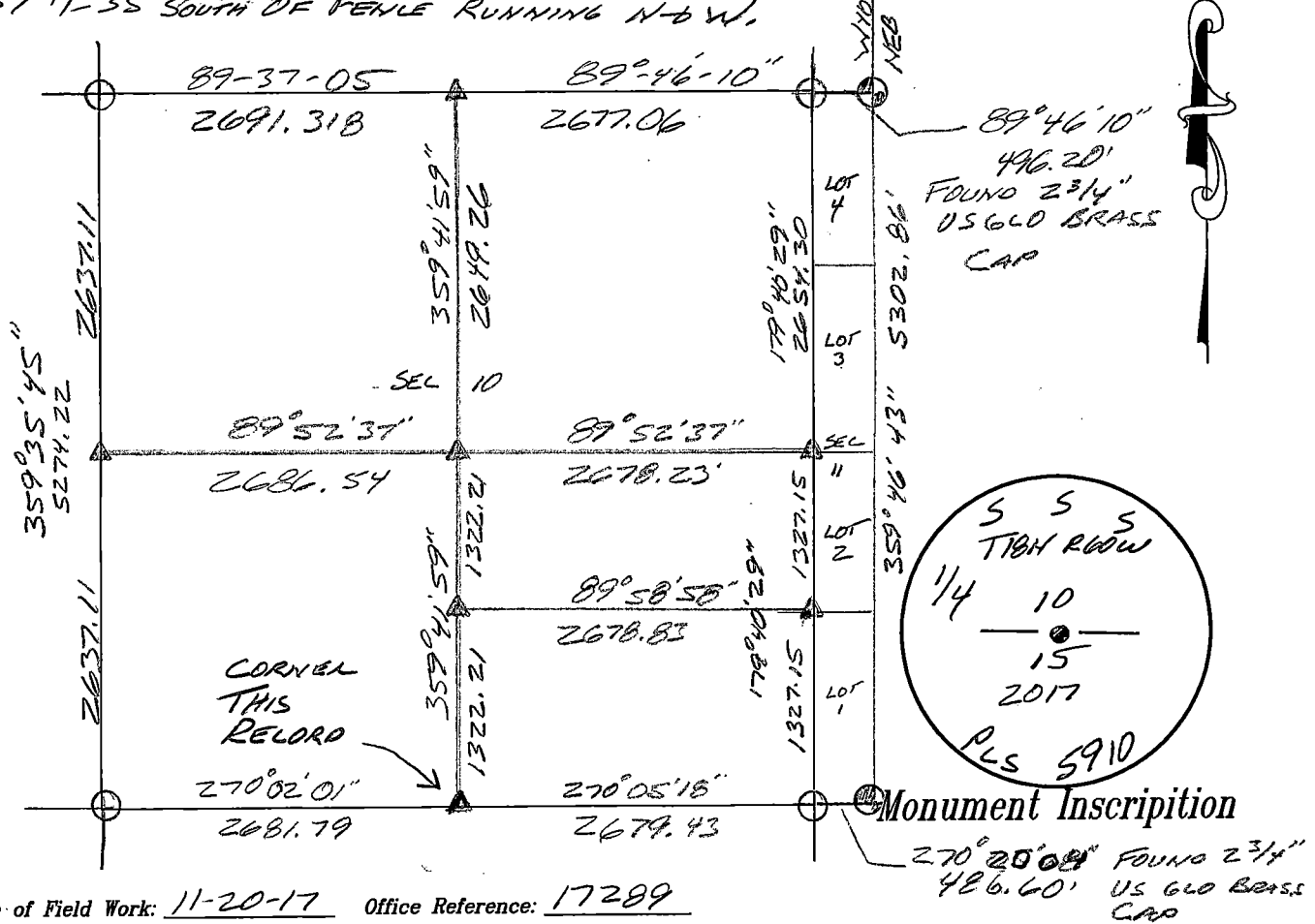
Record of original survey and citation of source of historical information (if corner is lost or obliterated). Detail corner monumentation evidence found and/or monument and accessories established to perpetuate the location corner. Sketch of relative location of monument, accessories; and reference points with course and distance corner(s) (if determined in this survey). Method and rationale for reestablishment of lost or obliterated corner.

**RECORD:** SET A LIMESTONE 18X12X3, 12 INCHES DEEP MARKED 1/4 ON NORTH SIDE FOR 1/4 SECTION CORNER

**MONUMENT FOUND:** FOUND NOTHING.

**MONUMENT SET:** SET A 5/8" X 24" REBAR WITH A 2 1/2" ALUMINUM CAP DOWN 0.4' BELOW SURFACE OF COUNTY ROAD 237 WITH THE CAP STAMPED AS SHOWN.

**REFERENCES:** MONUMENT WAS SET IN THE CENTERLINE OF COUNTY ROAD 237 N-35' SOUTH OF FENCE RUNNING N-6 W.



Date of Field Work: 11-20-17 Office Reference: 17289

REC # 726053  
RECORDED 3/1/2018 AT 9:40 AM BK# 2576 PG# 1583  
Debra K. Lee, CLERK OF LARAMIE COUNTY, WY PAGE 1 OF 1

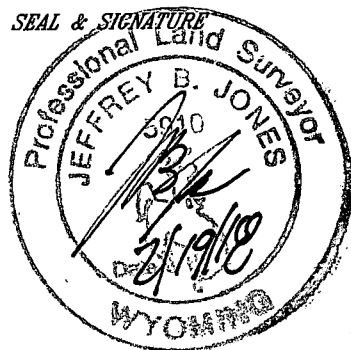
### Cross Index Plat

1	2	3	4	5	6	7	8	9	10	11	12	13	14	15	16	17	18	19	20	21	22	23	24	25	
A																									A
B																									B
C		6		5		4		3		2		1													C
D																									D
E																									E
F																									F
G			7		8		9		10		11		12												G
H																									H
I																									I
J																									J
K																									K
L			18		17		16		15		14		13												L
M																									M
N																									N
O																									O
P			19		20		21		22		23		24												P
Q																									Q
R																									R
S																									S
T			30		29		28		27		26		25												T
U																									U
V																									V
W																									W
X			31		32		33		34		35		36												X
Y																									Y
Z																									Z
1	2	3	4	5	6	7	8	9	10	11	12	13	14	15	16	17	18	19	20	21	22	23	24	25	

Firm/Agency, Address

**STEIL SURVEYING SERVICES LLC**  
**1102 WEST 19th STREET**  
**CHEYENNE WY 82001**  
Telephone Number: **(307) 634-7273**

This corner record was prepared by me or under my direction and supervision.



Corner Name SOUTH 1/4 Section 10, T 18 N, R 60 W, 6th P.M. Cross-Index No.: 5-15  
County: LARAMIE Wyoming